

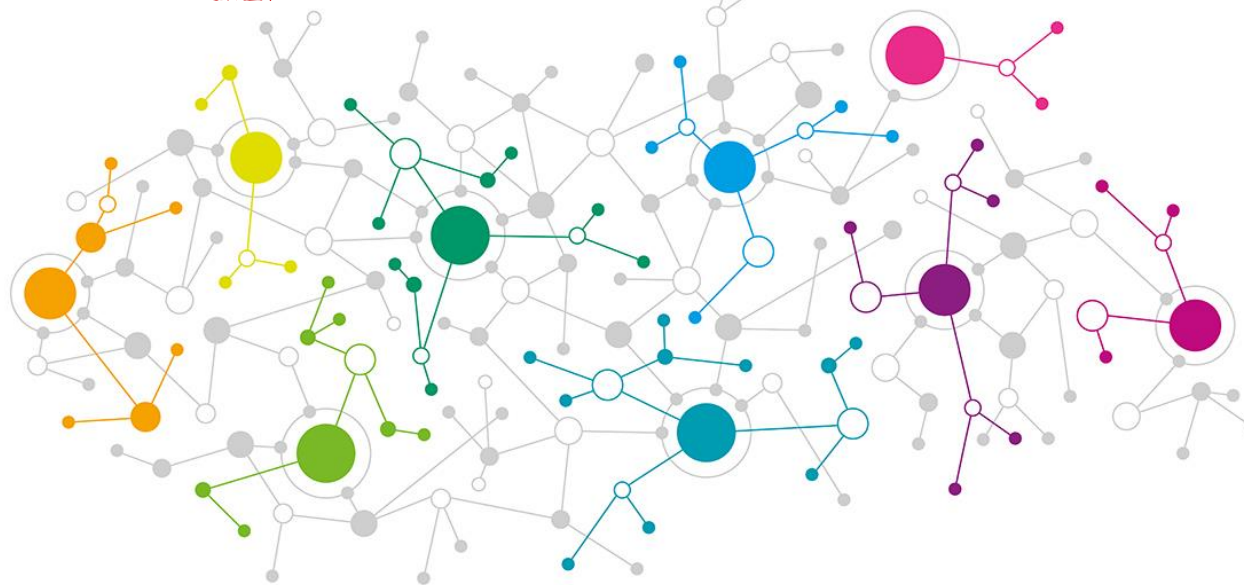
COURS PÌ

Enseignement privé à Distance
déclaré auprès du
RECTORAT DE PARIS



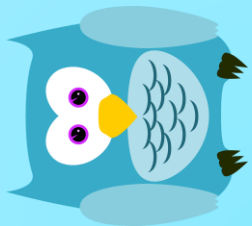
Ressources numériques

Le classeur des sons



Cours Pi
Paris - Montpellier

www.cours-pi.com



Objectif

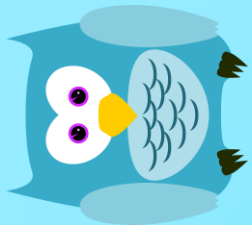
L'exercice ici proposé est destiné à compléter l'approche de la lecture par la syllabique qui ouvre le Cours de CP proposé par notre Etablissement.
Il permettra d'**apprendre** les **sons simples** et **complexes** par une **approche progressive** grâce à la présentation des lettres et des sons, des voyelles et des consonnes, des sons simples et complexes.



Public visé et compétences développées



- 1) **Les élèves en classe de CP :**
 - ✓ Apprendre les phonèmes et les graphèmes de manière ludique
- 2) **Tous les élèves du primaire :**
 - ✓ Réviser ou revoir les sons complexes
 - ✓ Fluidifier la lecture
- 3) **Les élèves présentant des troubles de l'apprentissage de la lecture :**
 - ✓ Contourner les difficultés rencontrées : **progresser tout en s'amusant**



Matériel nécessaire



Du papier blanc,
format A4



Un classeur grand
format à 4 anneaux



Une plastifieuse.

Si vous ne souhaitez pas plastifier vos
« cartes-sons », nous vous conseillons
alors de choisir du papier cartonné
pour les imprimer



Une perceuse



Réalisation de votre classeur des sons

- 1) Imprimer toutes les pages du présent document proposant des sons
- 2) Découper chaque carte selon les pointillés
- 3) Plastifier vos cartes
- 4) Perforer chaque carte à l'endroit indiqué



Utiliser votre classeur des sons

Son utilisation est simple :

- ✓ Positionnez les cartes **noires** sur les deux anneaux de **gauche** de votre classeur.
- ✓ Puis les cartes **rouges** sur les deux anneaux de **droite**.

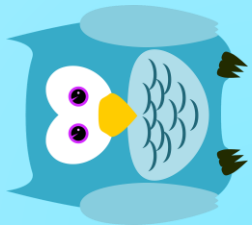
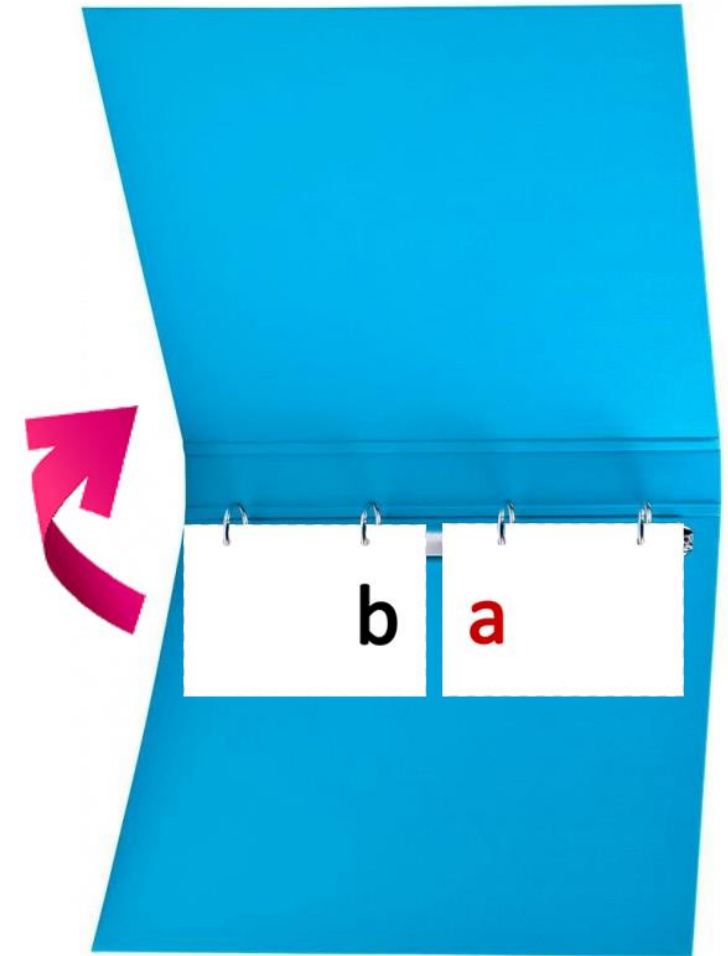
Tournez une à une les cartes de la partie rouge pour que votre enfant lise le son produit par les cartes réunies

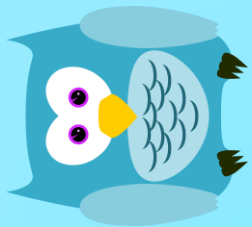
Exemple :

b a

b o

La pratique de cet exercice à raison de **10 minutes par jour** permettra à votre enfant de **rapidement mémoriser son alphabet** mais aussi les **sons simples** et **complexes**.

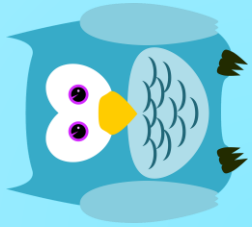




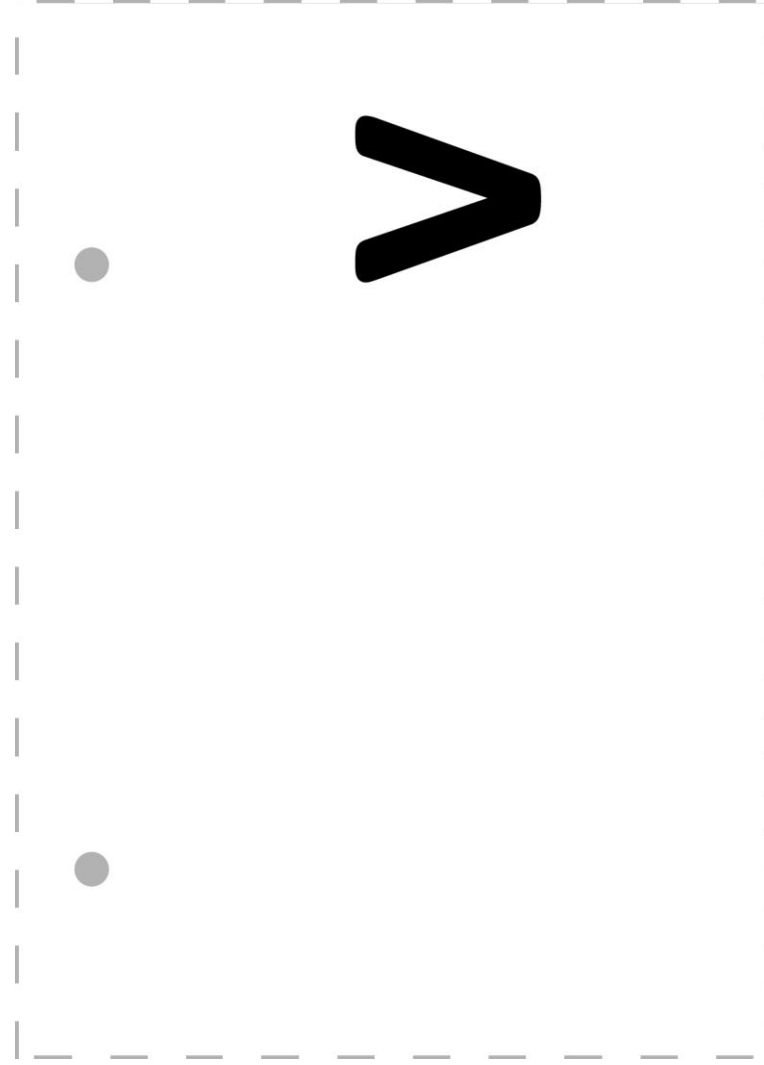
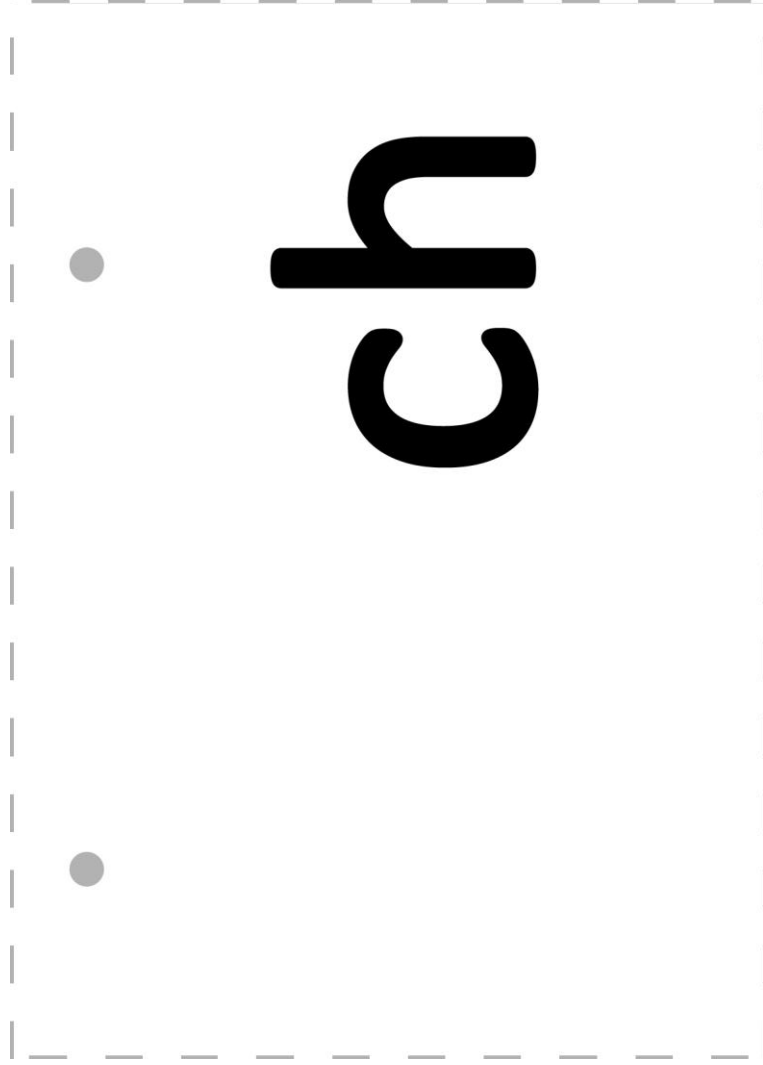
Le classeur des sons

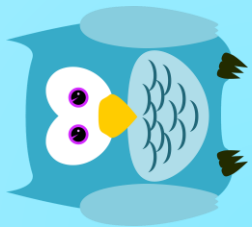
A dashed rectangular box containing a lowercase letter 'f' in the center. A grey dot is positioned at the top left of the box, and another grey dot is positioned at the bottom left of the box, indicating the starting points for writing the letter.

A dashed rectangular box containing a lowercase letter 's' in the center. A grey dot is positioned at the top left of the box, and another grey dot is positioned at the bottom left of the box, indicating the starting points for writing the letter.



Le classeur des sons

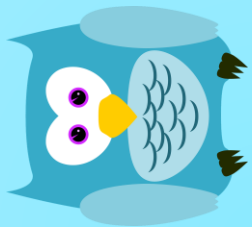




Le classeur des sons

A dashed rectangular box containing a large lowercase letter 'j'. A grey dot is positioned above the letter, and another grey dot is positioned to the left of the letter's vertical stem.

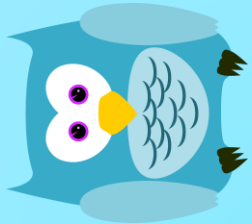
A dashed rectangular box containing a large lowercase letter 'm'. A grey dot is positioned above the letter, and another grey dot is positioned to the left of the letter's vertical stem.



Le classeur des sons

Tracing guide for the letter 'r'. It features a dashed rectangular box containing a solid black lowercase 'r'. A grey dot is positioned at the top of the vertical stem, and another grey dot is at the bottom of the stem.

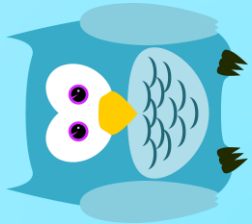
Tracing guide for the letter 'i'. It features a dashed rectangular box containing a solid black lowercase 'i'. A grey dot is positioned at the top of the vertical stem, and another grey dot is at the bottom of the stem.



Le classeur des sons

Tracing guide for the letter 'n'. It features a dashed rectangular box containing a solid black lowercase letter 'n'. A grey dot is positioned at the top left of the letter, and another grey dot is positioned at the bottom left of the letter, indicating the starting points for writing.

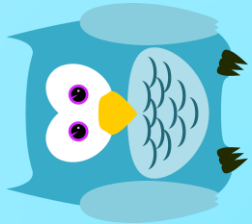
Tracing guide for the letter 'p'. It features a dashed rectangular box containing a solid black lowercase letter 'p'. A grey dot is positioned at the top left of the letter, and another grey dot is positioned at the bottom left of the letter, indicating the starting points for writing.



Le classeur des sons

Tracing guide for the lowercase letter 't'. It features a dashed rectangular box with a solid black 't' in the center. A grey dot is positioned at the top of the vertical stem, and another grey dot is at the bottom of the stem, indicating the starting and ending points for writing.

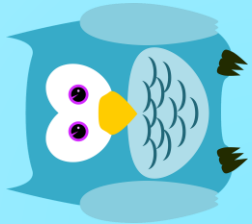
Tracing guide for the lowercase letter 'c'. It features a dashed rectangular box with a solid black 'c' in the center. A grey dot is positioned at the top of the letter, and another grey dot is at the bottom, indicating the starting and ending points for writing.



Le classeur des sons

Tracing guide for the letter 'k'. It features a dashed rectangular box with a solid 'k' in the center. Two grey dots are positioned on the left side of the box, one at the top and one at the bottom, indicating the starting points for the vertical stroke.

Tracing guide for the letter 'd'. It features a dashed rectangular box with a solid 'd' in the center. Two grey dots are positioned on the left side of the box, one at the top and one at the bottom, indicating the starting points for the vertical stroke.



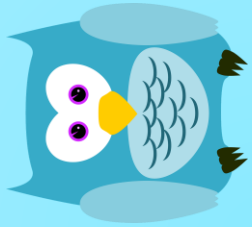
Le classeur des sons

• b

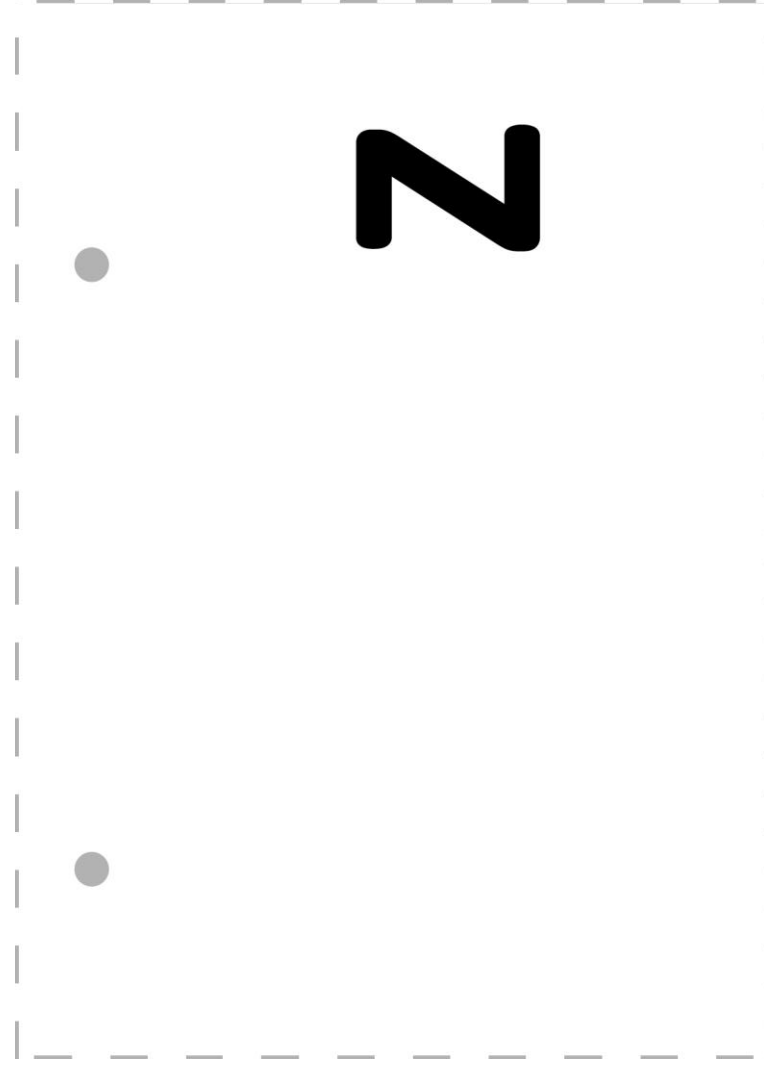
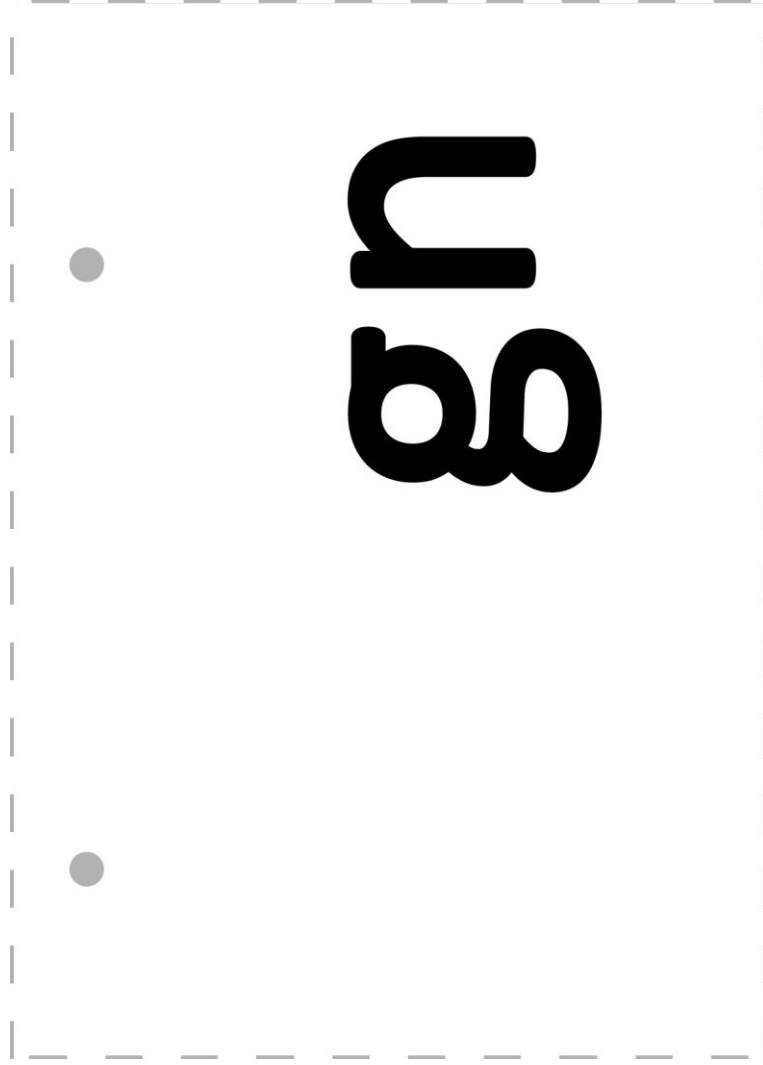
•

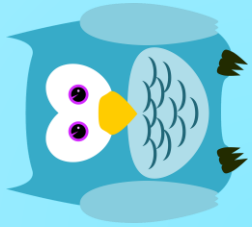
• b

•



Le classeur des sons

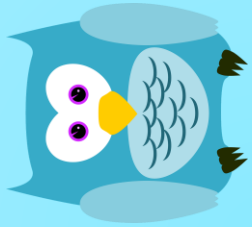




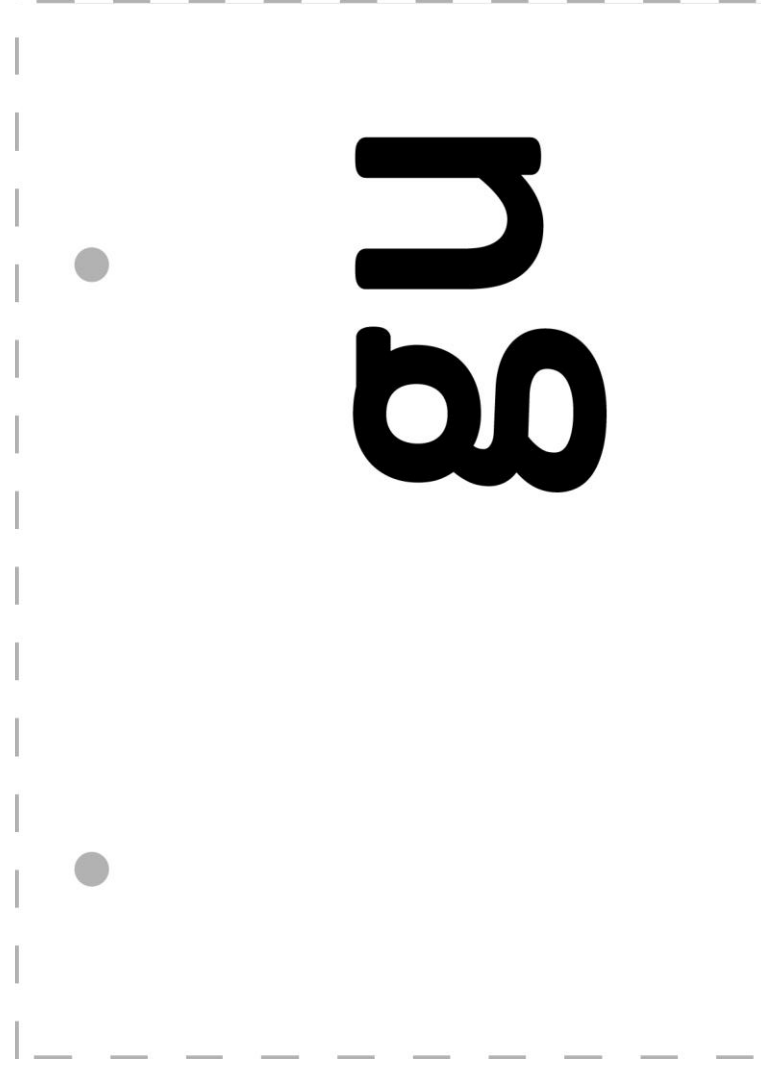
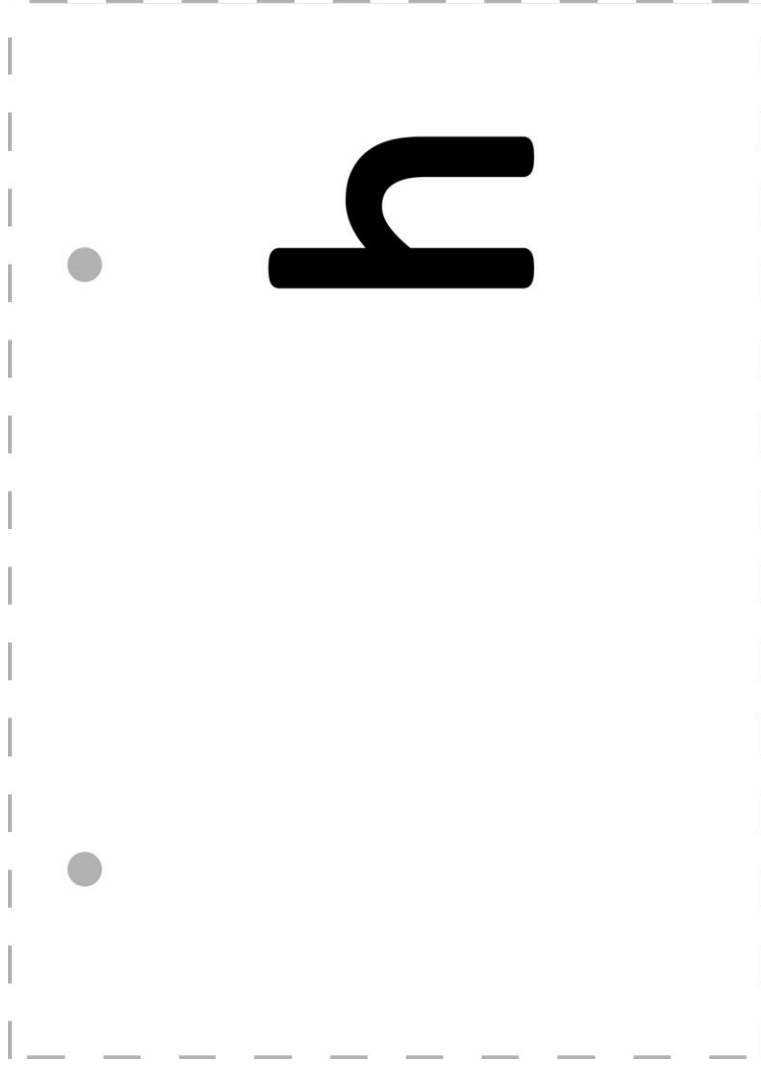
Le classeur des sons

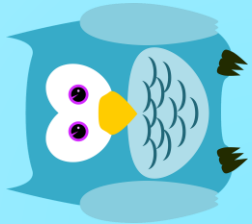
p h

q u



Le classeur des sons

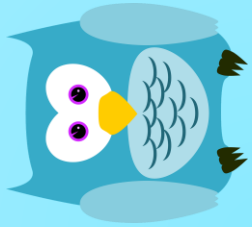




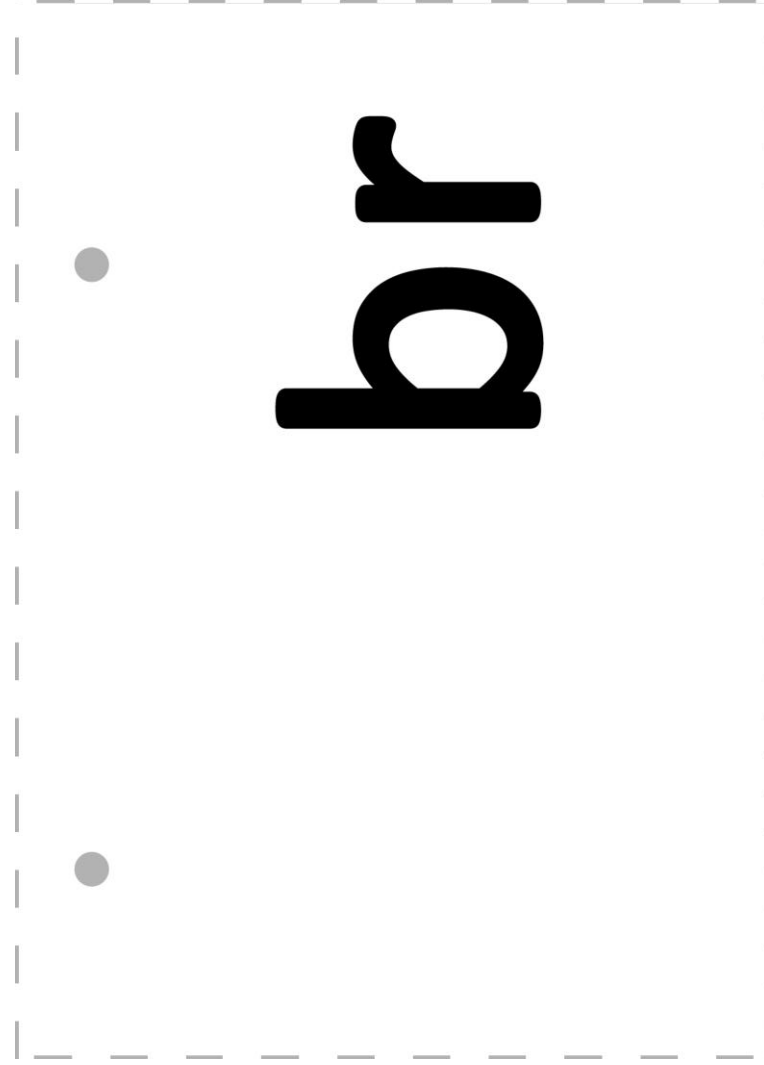
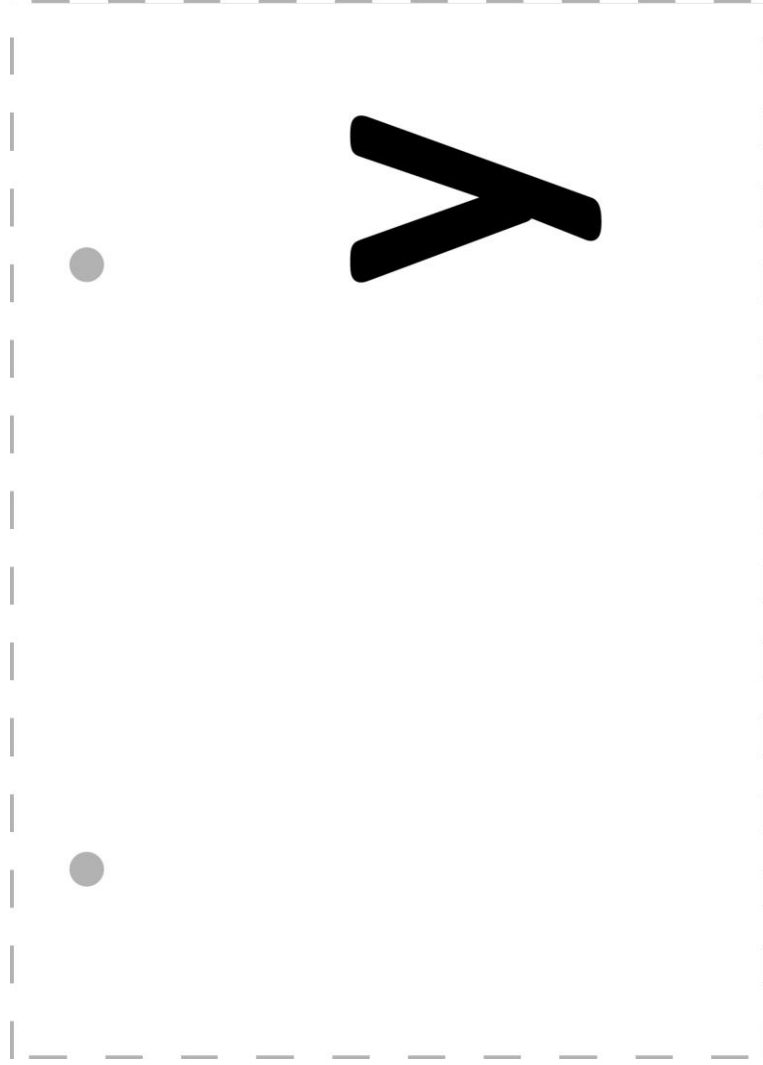
Le classeur des sons

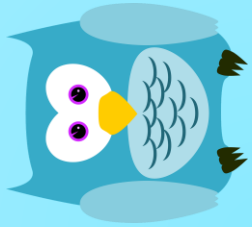
Tracing guide for the letter 'w'. It features a dashed rectangular box containing a large black 'w' in the center. To the left of the 'w', there are two grey dots: one at the top and one at the bottom, indicating the starting points for the two downward strokes of the letter.

Tracing guide for the letter 'x'. It features a dashed rectangular box containing a large black 'x' in the center. To the left of the 'x', there are two grey dots: one at the top and one at the bottom, indicating the starting points for the two intersecting diagonal strokes of the letter.



Le classeur des sons





Le classeur des sons

•

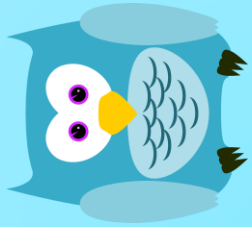
•

pr

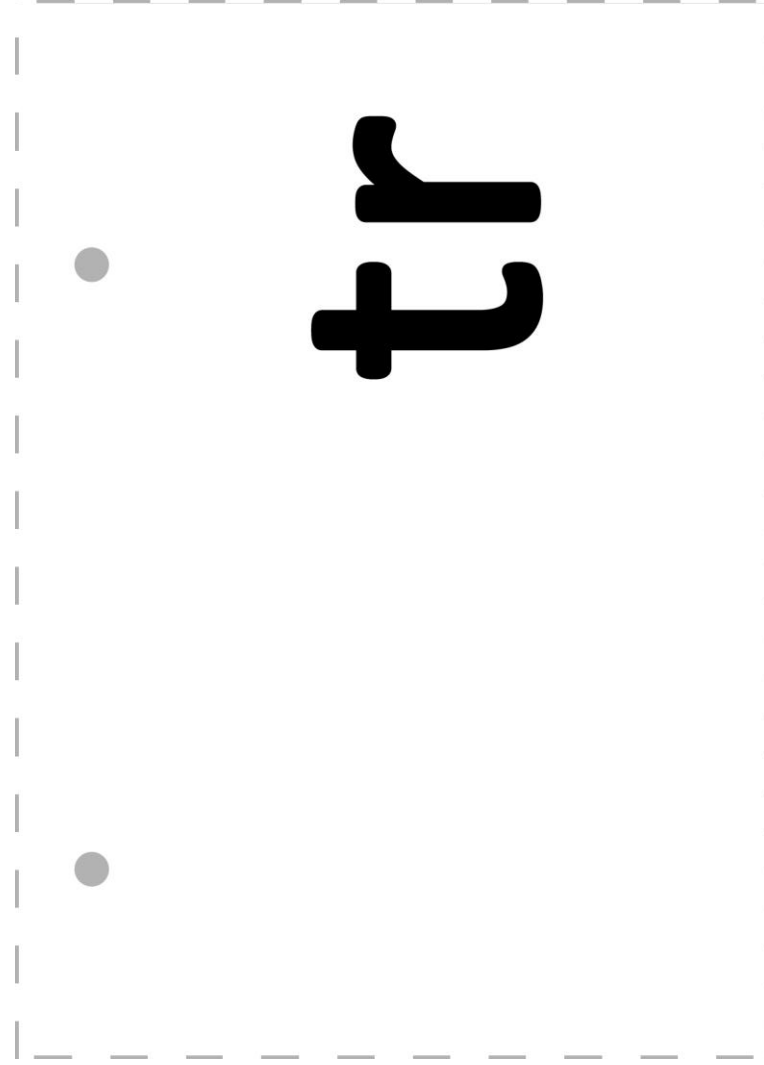
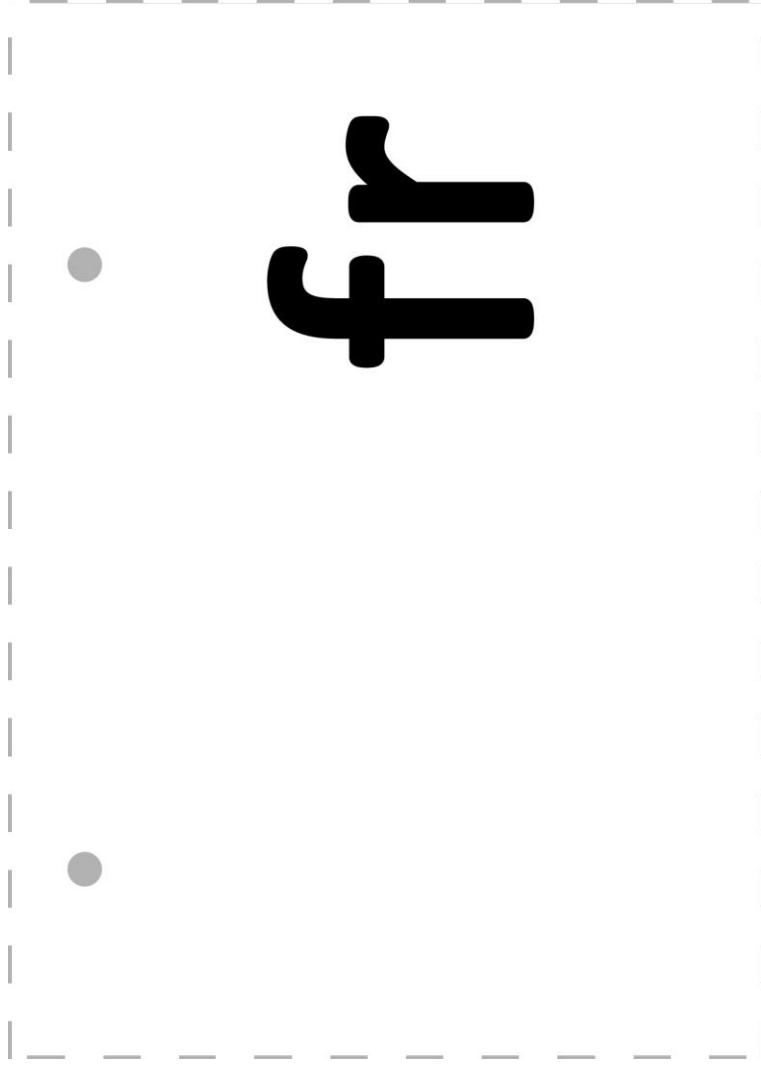
•

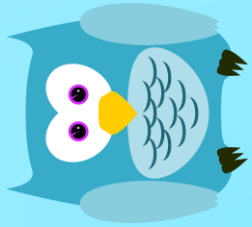
•

dr

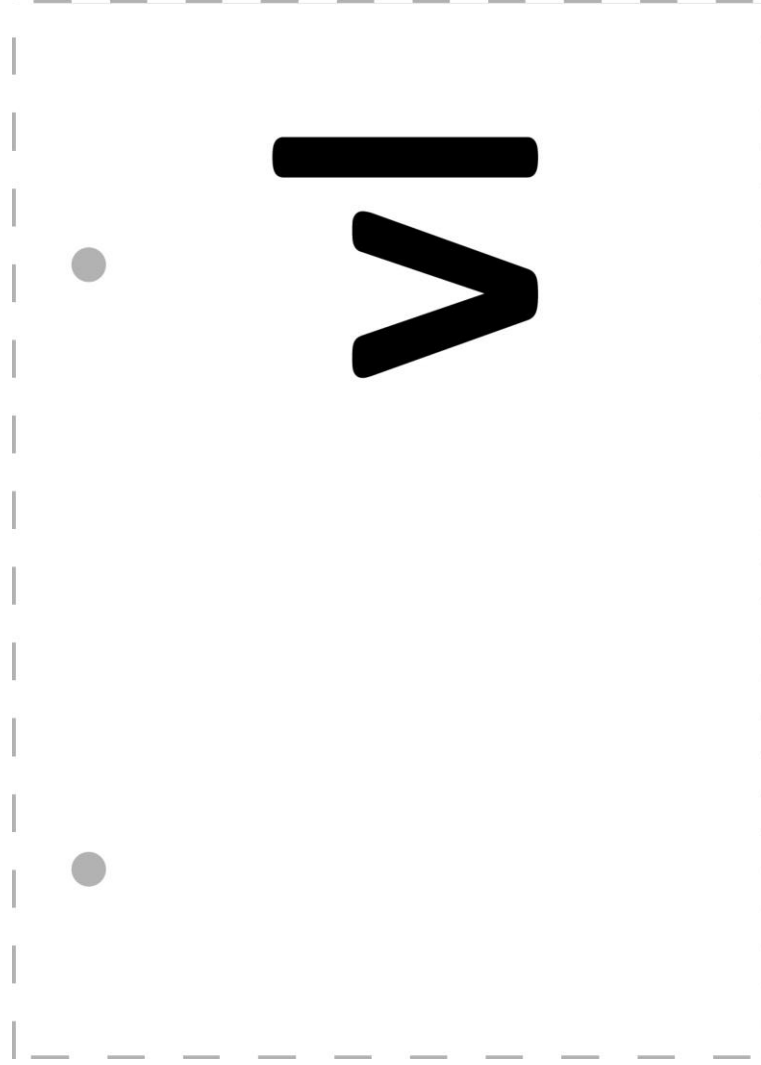
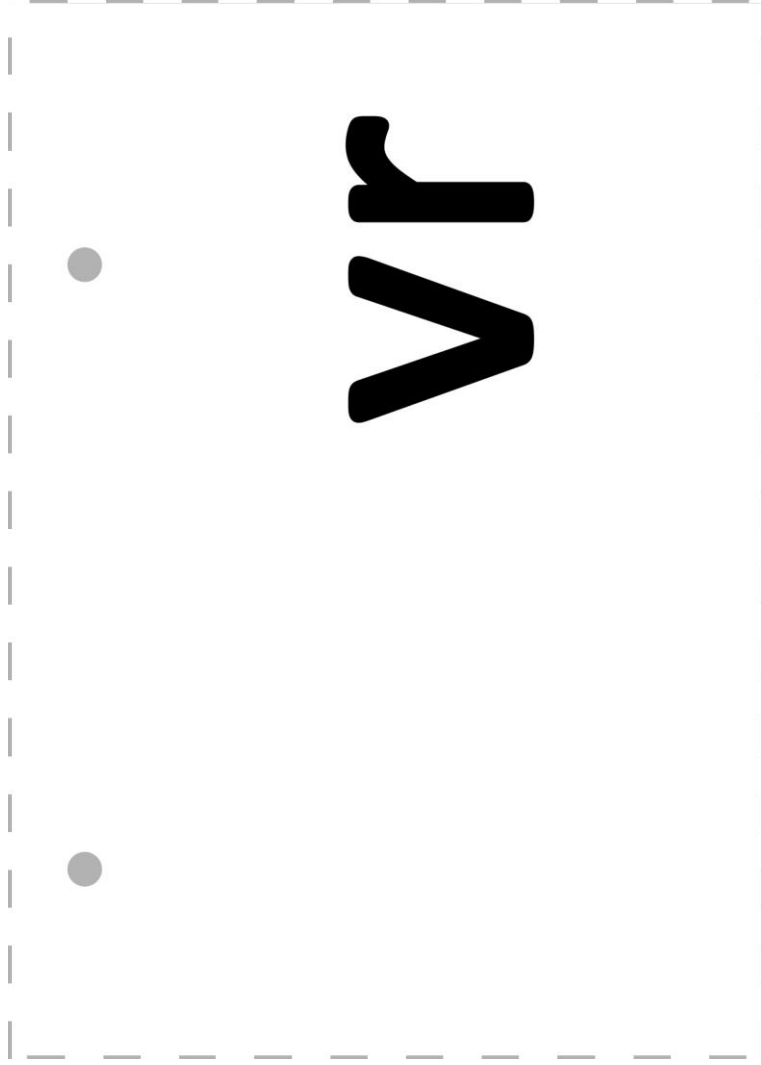


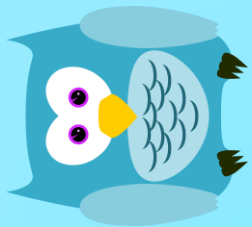
Le classeur des sons





Le classeur des sons

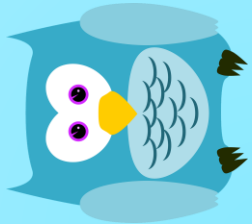




Le classeur des sons

Tracing guide for the letter 'a'. A dashed rectangular box contains a red lowercase letter 'a' in the center. Two grey dots are positioned on the left side of the box, one near the top and one near the bottom, indicating the starting points for the two strokes used to form the letter.

Tracing guide for the letter 'i'. A dashed rectangular box contains a red lowercase letter 'i' in the center. Two grey dots are positioned on the left side of the box, one near the top and one near the bottom, indicating the starting points for the two strokes used to form the letter.



Le classeur des sons

o

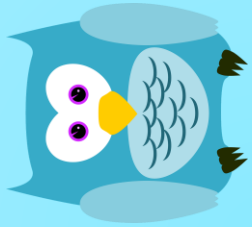
o

O

é

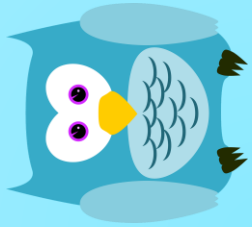
é

é



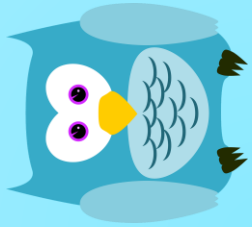
Le classeur des sons





Le classeur des sons

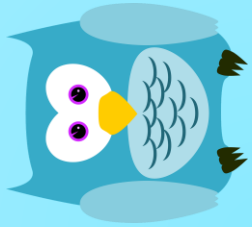




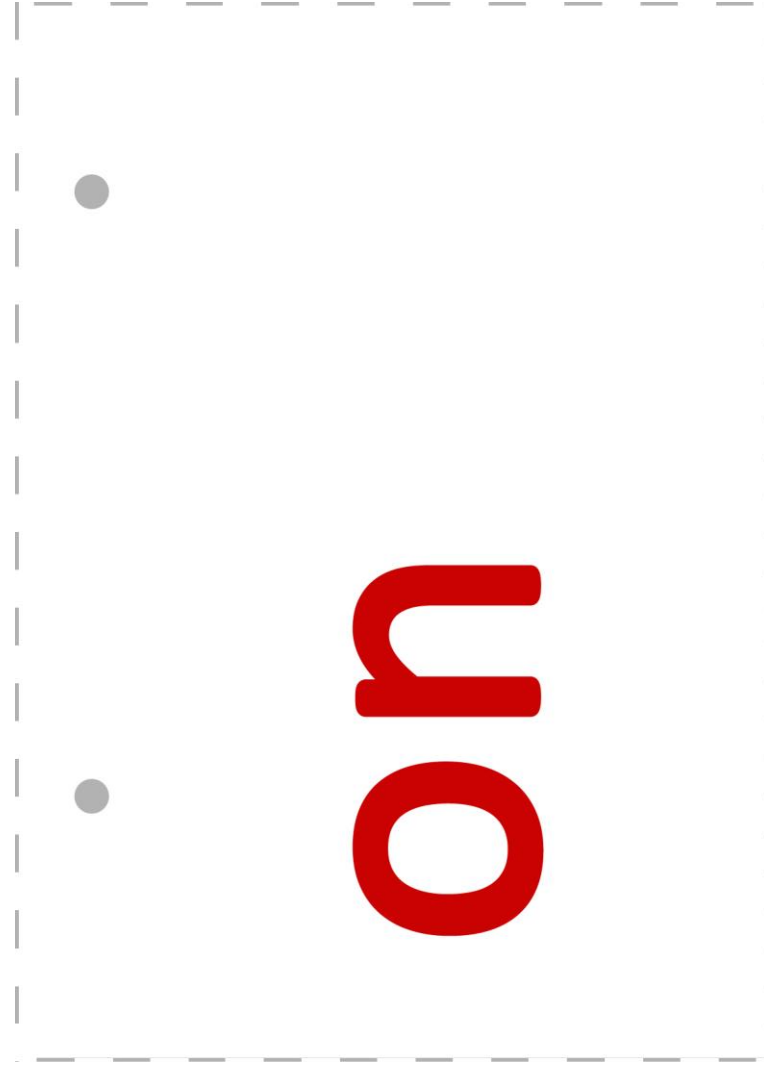
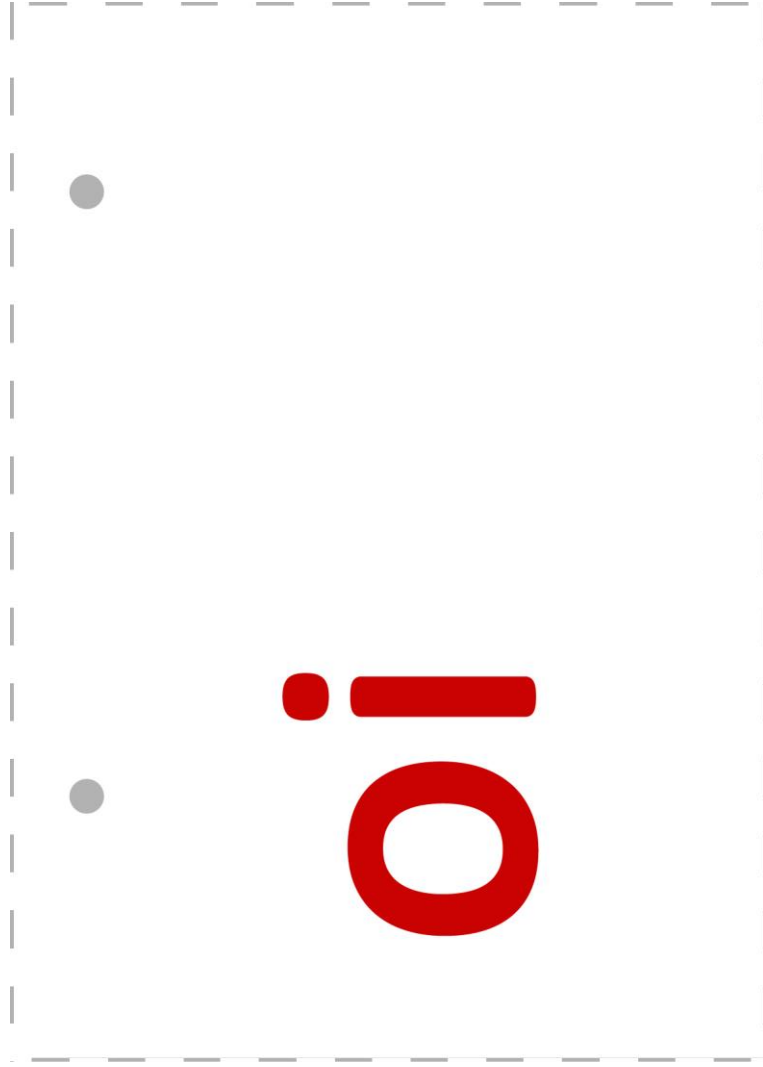
Le classeur des sons

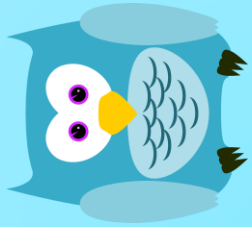
e t

i e



Le classeur des sons

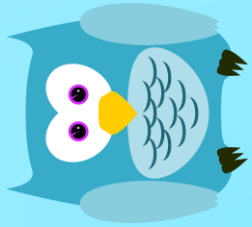




Le classeur des sons

in

an



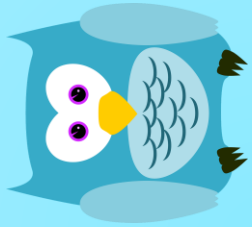
Le classeur des sons



en



au



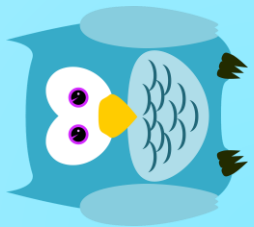
Le classeur des sons



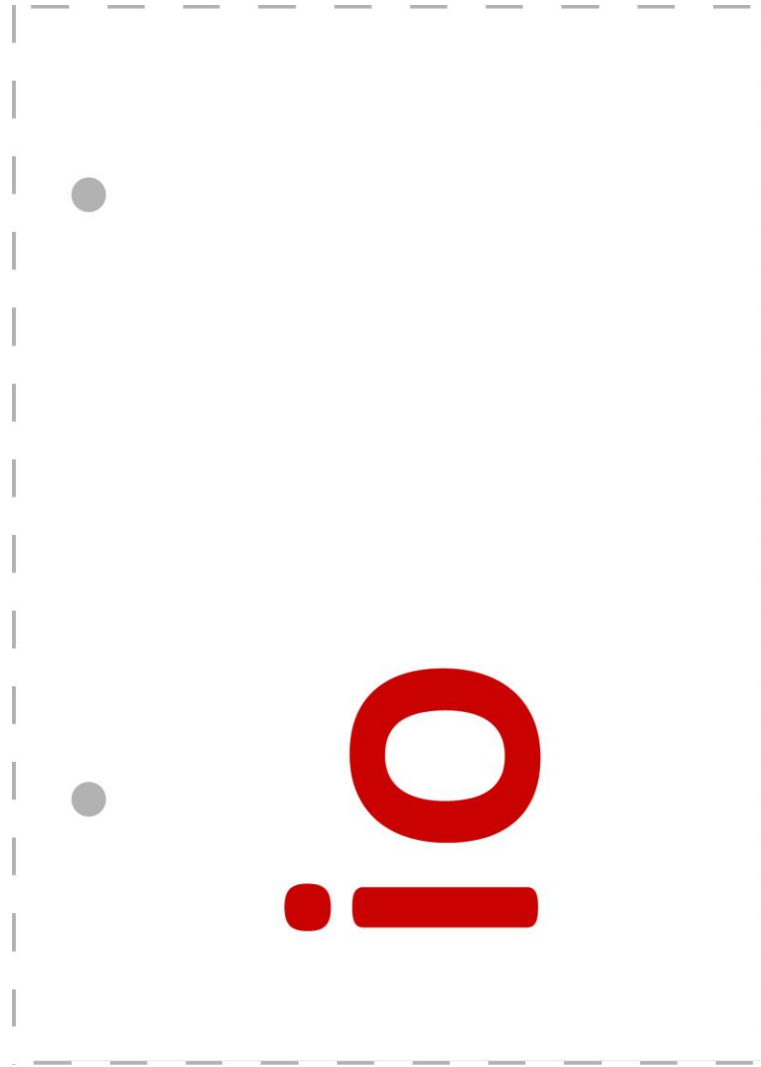
e u

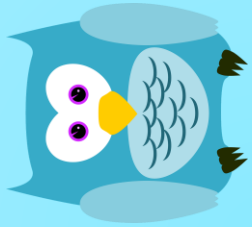


e a u



Le classeur des sons

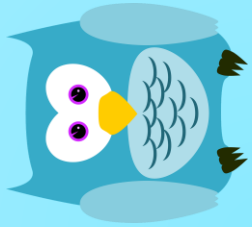




Le classeur des sons

ie

ji



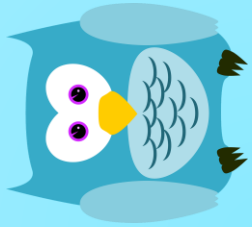
Le classeur des sons



ou



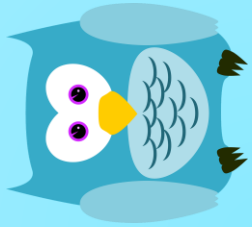
ar



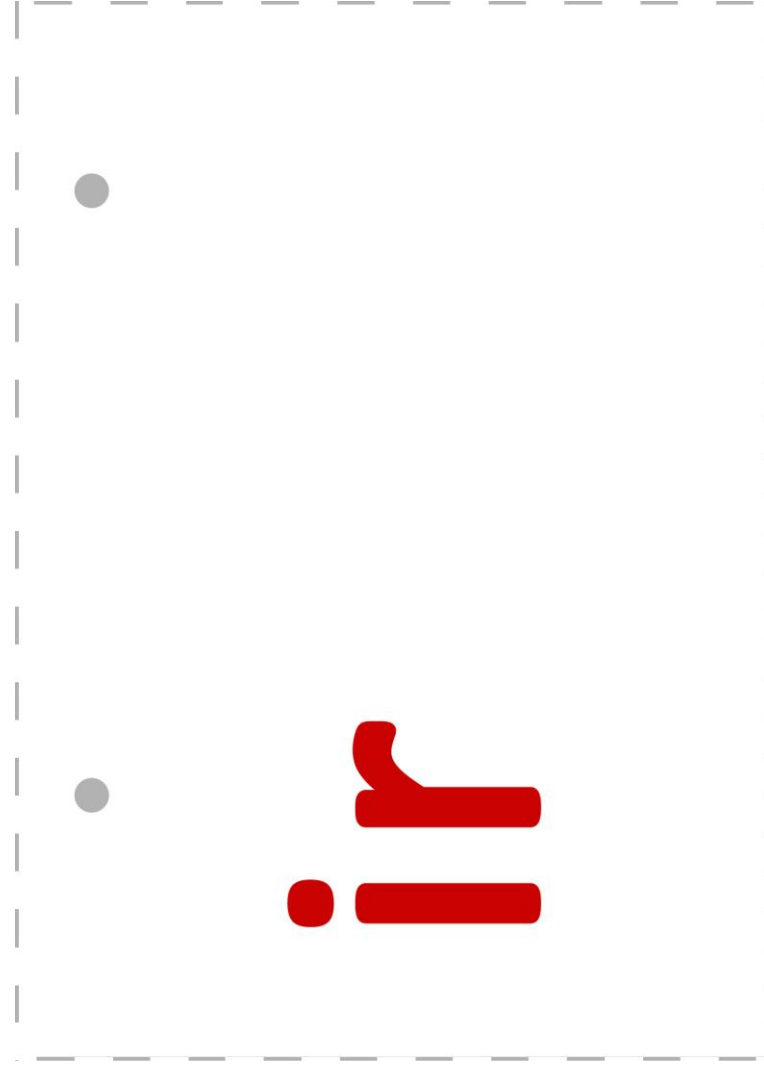
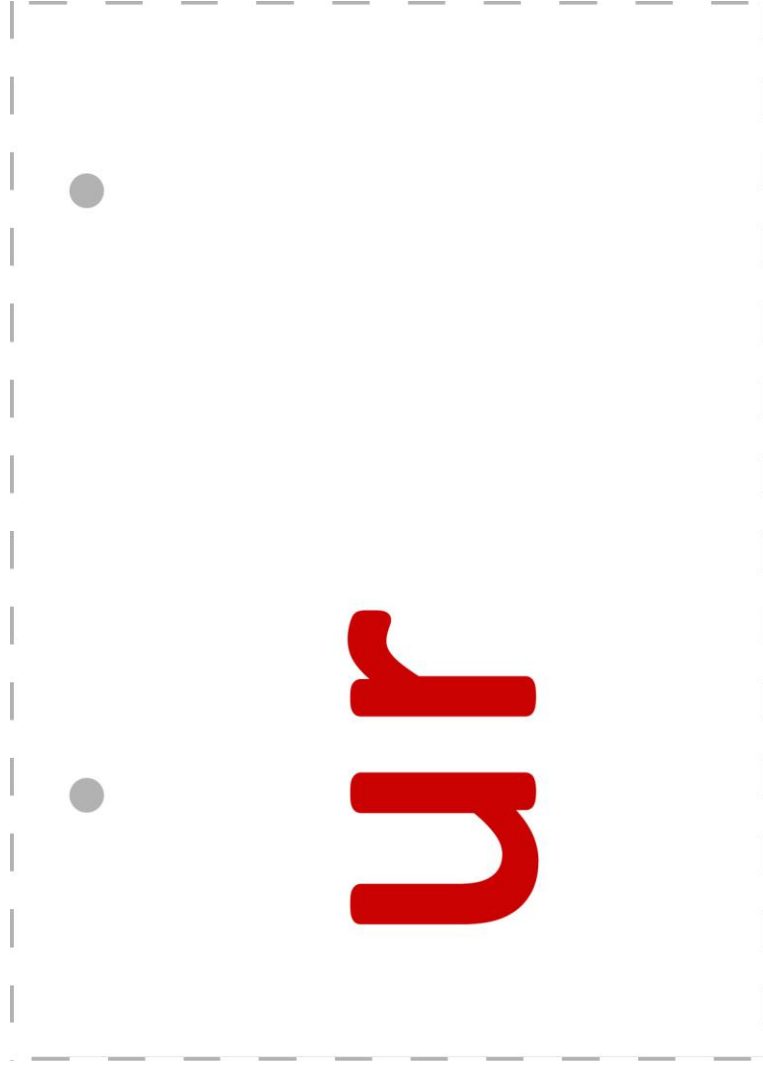
Le classeur des sons

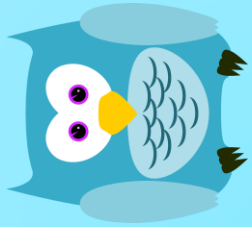
e r

o r



Le classeur des sons

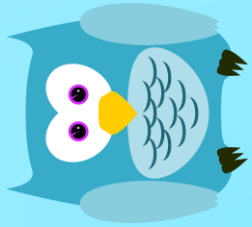




Le classeur des sons

• •
ile

• •
ez



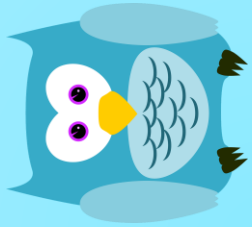
Le classeur des sons



ain



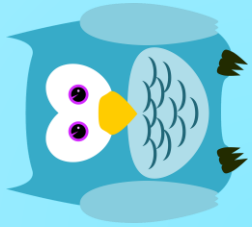
ein



Le classeur des sons

oin

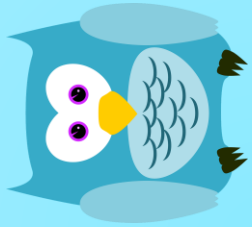
ion



Le classeur des sons

ian

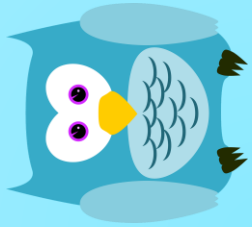
ien



Le classeur des sons

e lle

ette



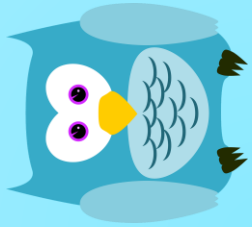
Le classeur des sons



esse



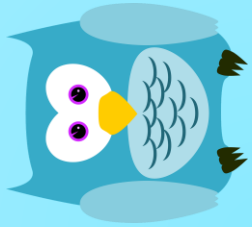
erre



Le classeur des sons

ail

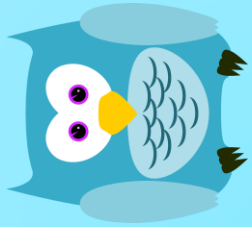
eil



Le classeur des sons

e u i l

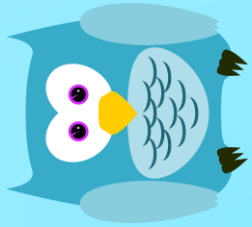
o u i l



Le classeur des sons

aille

eille



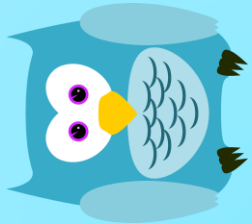
Le classeur des sons



euille



ouille



Le classeur des sons

